



**National Institute for
Health Research**

Patient and Public Involvement and Engagement Strategy 2017-2022

*NIHR Infrastructure at Guy's and St Thomas' NHS Foundation Trust and King's
College London*

Context and Purpose

Guy's & St Thomas' NHS Foundation Trust (GSTT) hosts a number of different National Institute for Health Research (NIHR) funded centres in partnership with King's College London (KCL).

The largest of these infrastructure awards is the Biomedical Research Centre (BRC). The purpose of the BRC is to conduct translational research which transforms scientific discoveries into new treatments and improved care for patients. The BRC was established as one of the first five Comprehensive BRCs by the NIHR in 2007, receiving a second funding award to continue its ground-breaking work in 2011. Following a competitive application process the BRC at GSTT was further recognised for its outstanding research achievements in 2016 and awarded further funding for 2017-2022. This will allow it to continue the development of innovative research in a number of disease areas.

In addition to the NIHR BRC, GSTT is also home to a NIHR-funded Clinical Research Facility (CRF) which is a dedicated space in which to carry out clinical research/experimental medicine. Following a competitive application process in 2016, the CRF has also been awarded additional funding from 2017 until 2022 to continue its work.

GSTT also host the NIHR Cardiovascular Medtech and In vitro diagnostic Co-operative (MIC) (previously the Cardiovascular Healthcare Technology Cooperative, HTC). The MIC provides infrastructural support to identify, encourage and facilitate the development of new medical devices and technology-driven solutions that will improve the diagnosis, treatment and well-being of patients with cardiovascular disease. Following a successful application in 2017, the MIC was awarded funding from 2018 until 2022.

The NIHR Clinical Research Network also provides dedicated support for a large number of research studies across the Trust's clinical areas.

As part of the recent funding applications to the NIHR for the BRC, CRF and MIC, we submitted our strategies for Patient and Public Involvement and Engagement (PPIE). The purpose of this document is to outline our organisational vision for PPIE and provide detail on our overarching coordinated PPIE strategy for 2017 until 2022.

Terminology

Throughout this document there will be references to:

- Patient and Public Involvement (PPI) - Involving people in the design and conduct of individual studies and supporting the dissemination of research findings
- Public Engagement (PE) - Informing people about research, including disseminating study findings to participants and the wider public

Our Vision

Our primary objective over the next five years is to ensure research activities across the Trust are considered core business of the hospitals. Our PPI/E Strategy will contribute to this by ensuring that all clinical research taking place at GSTT and KCL will be designed, carried out and disseminated with a patient-centred focus. By centring on patients we will further align research with the core values of the Trust by putting patients first.

We will involve patients and the public at all stages of the research process including design of individual studies, contribution to study governance and oversight and dissemination of study findings. This will in turn improve outcomes for all patients as research is translated into standard care.

The BRC, CRF and MIC will work collaboratively on the involvement and engagement of patients and the public with the goal of influencing patient focussed research across the broader NIHR Clinical Research Network portfolio at GSTT and KCL.

Strategic Objectives

In order to achieve our vision we will work towards the following strategic objectives which we have grouped into a number of different areas.

Training & Development

1. Maintain and enhance the infrastructure and professional capacity across our NIHR infrastructure to maximise PPI and PE in medical research.
2. Inform and monitor cultural change across the wider Research and Development teams to ensure that more patients, families and members of the public are taking part in, or collaborating on, involvement and engagement.
3. Promote collaborative research ideation activities between Research and Development teams and PPI groups, addressing unmet needs along the patient pathway.

Research Experience

4. Routinely gather feedback from research participants to monitor research participant experience and identify where improvements are needed.
5. Improve and increase the dissemination of research findings from research studies with a particular focus on reaching those who participated.

Engagement & Networking

6. Contribute to development of national policy through our work with INVOLVE and the UKCRF Network.
7. Increase awareness of research within the Trust in non-research staff groups.
8. Promote NIHR research at GSTT/KCL within the local community to increase awareness of research activity.
9. Increase industry participation in PPI activities.

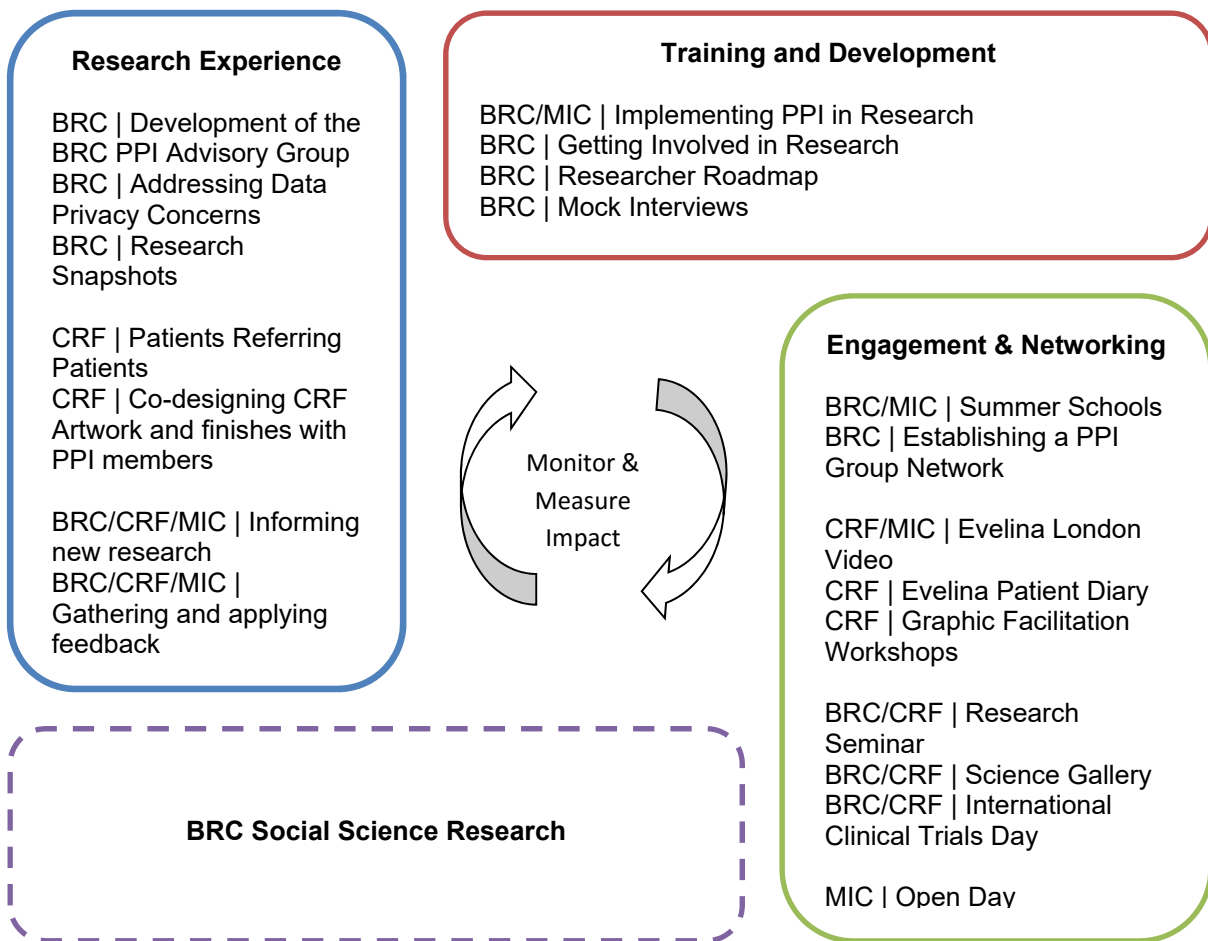
Impact

10. Establish methods of routinely collecting data on the reach and impact of our involvement and engagement work.

Projects

Within each work stream we will undertake a number of projects and simultaneously monitor and measure the impact of all of our work. We anticipate new projects starting up throughout the funding period as we gather feedback from patients and the public, and as previous projects are completed. Some projects will focus only on a single objective but we intend that others will make contributions towards multiple different objectives. We will update the project diagram regularly via our website.

The BRC is also funding a programme of social science research which we will use to inform changes and develop new project ideas.



Monitoring, evaluating and reporting

For each objective and for some individual projects we will undertake some baseline measurements e.g. the number of researchers who have attended training or who have previously sought advice on implementing PPI/E so that we can measure these numbers again in the future and properly assess our impact.

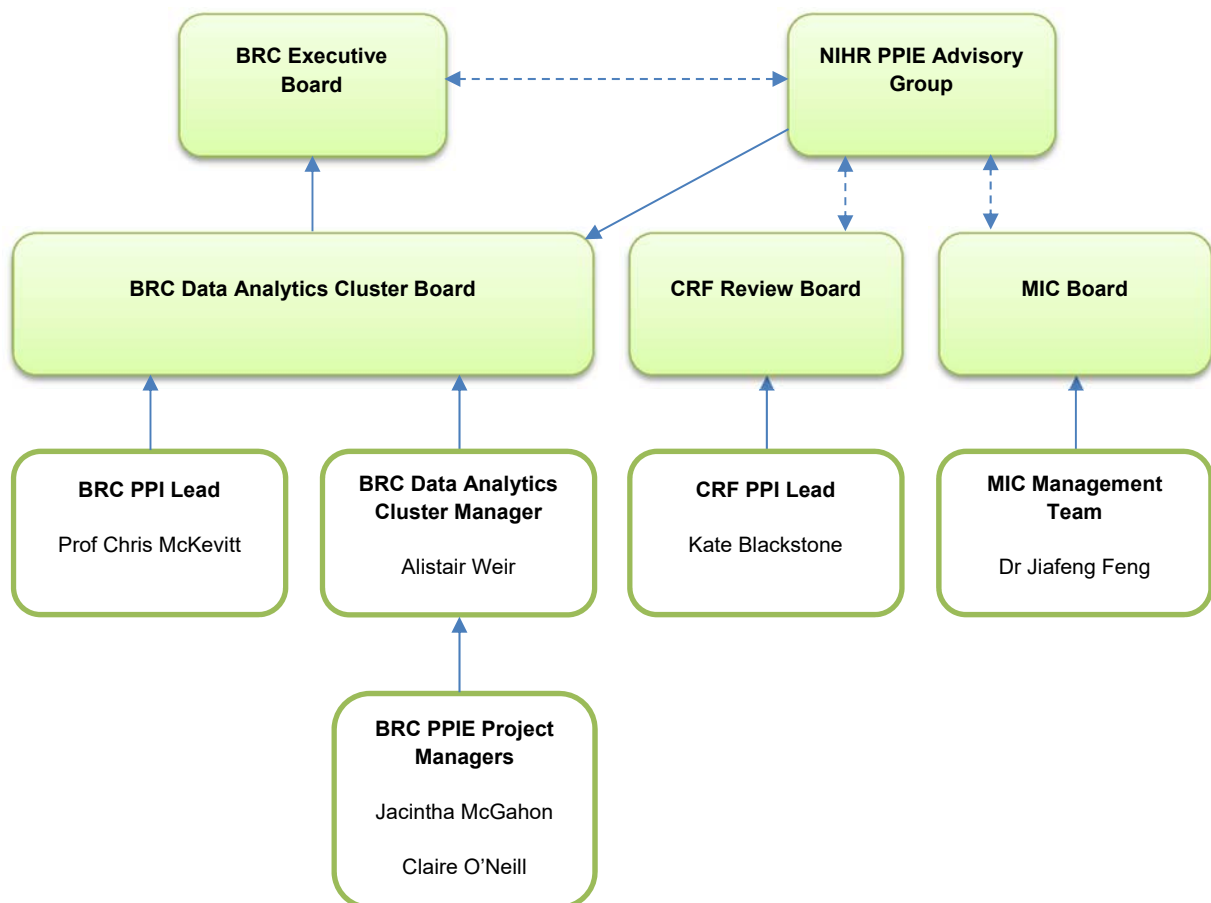
We are required to submit an annual report to the NIHR detailing our progress on our objectives and publish an annual summary on our website. Throughout the year we will also routinely publish updates on project activity.

We will review this document and our strategic aims at the midpoint in our funding in 2020.

Our Team

The BRC PPIE team consists of staff based at both GSTT and KCL and it is operationally managed through the BRC Data Analytics Cluster. The BRC PPI team work collaboratively with the CRF, MIC and other research teams in GSTT and KCL. As the CRF and MIC do not have dedicated PPI teams but CRF and MIC staff will undertake PPIE projects as part of their routine activities; CRF and MIC PPIE activities are reported to the CRF and MIC Boards respectively. We also have a NIHR PPIE Advisory Group (PPIAG) consisting of patients and members of the public.

Members of the PPIAG also sit on the BRC's Executive Board, which has responsibility for all activity across the BRC's Clusters, including the Data Analytics Cluster. At this meeting, issues and topics from the PPIAG are discussed by the Executive and the PPIAG members can contribute to the Executive Board's own discussions. Patient representatives also sit on the CRF Review Board and MIC operational decisions are made in consultation with patient and public representatives.



Partners and collaborators

We will work closely with the following groups:

- Our NIHR Patients and Public Involvement Advisory Group (PPIAG)
- GSTT Research and Development team
- The R&D Marketing and Communications team
- GSTT Patient Experience team (which incorporates PPI)
- GSTT Equality and Diversity team
- The KCL Widening Participation Committee
- NIHR Research Design Service (RDS), London
- Clinical Commissioning Groups (CCG) in South East London
- Local Authorities
- Healthwatch
- INVOLVE
- The UK Clinical Research Facility Network
- NIHR Office for Clinical Research Infrastructure
- The NIHR Clinical Research Network
- Other NIHR BRCs, MICs, and CRFs.